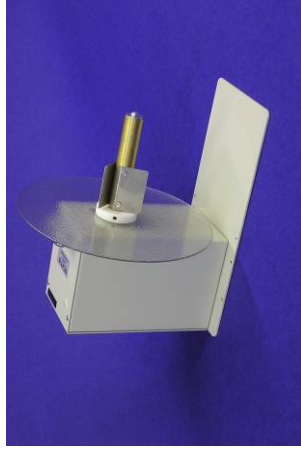


Economy Label Unwinder with Fixed Braking



UCAT-S Economy Unwinder

- Low-cost economy Unwinder
- Limited Fixed Braking
- Standard 3" (76-mm) Core Holder

Remove all parts from shipping container and verify contents.

Package Contents

- User Manual (this document)
- UCAT-S Unit

Retain the Shipping Container and Packaging for Storage and Transport.

- **KEEP MANUAL IN A SAFE PLACE FOR FUTURE REFERENCE** •

Product Limited Warranty

All Labelmate Products are warranted to the original end-user customer to be free from defects in materials and workmanship. If it is determined by Labelmate that a product has failed under the terms of this warranty, the product will be repaired or replaced at no charge to the customer. Labelmate reserves all rights to determination of coverage and liability under this warranty. The warranty period for all new Labelmate products is outlined below:

Warranty Period	Products Covered
5 years	Label Rewinders Label Unwinders
3 years	Label Counters (mechanical parts only) Label Slitters (mechanical parts only) Label Dispensers Printer Mechanisms
1 year	Power Supply Modules Counter Modules Encoders Any products not specified above.

The warranty period for all products starts on the date purchased by the original end-user customer. Warranty coverage is not transferable with ownership and will terminate immediately upon rental, resale or any other change in ownership. This warranty does not cover repair to any product which is damaged, has been modified, is missing parts, or has been opened or repaired by any unauthorized person. Use of any unauthorized accessory or attachment will void coverage. Purchase documentation should be retained for coverage verification.

In the event your product requires service, please contact Labelmate at (877) 833-7149 toll-free inside the USA or +1 (702) 435-8535 outside the USA, for the location of the nearest authorized service center or questions regarding warranty coverage. The customer assumes responsibility for all cost and risk incurred in transport for service.

Labelmate makes no other warranty of any kind expressed or implied, or to suitability or fitness for a particular purpose. No other person, agent or reseller is authorized to give any warranties on behalf of Labelmate. Any obligation to warranty other than that specifically addressed above is hereby disclaimed.

LABELMATE LLC

12A Sunset Way, Henderson, NV 89014 USA
(702) 435-8535 FAX (702) 435-8536
Toll-Free (877) 833-7149 in USA!
info@labelmate.com

LABELMATE EUROPE
Brussels, Belgium



WARNING

**This product is for indoor use only.
Not for use in wet locations.**



LABEL UNWINDING FOR LABEL SLITTING:

The UCAT-S Label Rewinder has only limited fixed braking and is therefore not ideal for label slitting operations. For label slitting use a LABELMATE UCAT-1 Unwinder or one of LABELMATE's powered Unwinders or Rewinders to provide correct web tensioning for slitting.

MAINTENANCE:

The UCAT-S requires no maintenance.

SET-UP:

1. Locate the Plastic Flange Plate (disk) that has a white Nylon hub with an Allen Screw.
2. Slide the Flange Plate onto the brass Shaft, with the Hub facing out, away from the UCAT-S Chassis.
3. Install the 3 metal Fins onto the Shaft. The curved side of each Fin faces the Shaft. Secure each Vane with 2 slotted screws provided.
4. Position the Plastic Flange Plate even with the inside end of the Shaft so there is clearance between the Flange and the Chassis.
5. Using the provided Allen wrench, tighten the Allen screw in the Hub until it is snug.
6. Set the unit in place near the label entrance path to your printer.

Your UCAT-S is now ready for use.

LABEL UNWINDING FOR PRINTING:

CAUTION: AVOID ACCIDENTS. THE UCAT-S BY ITSELF WEIGHS APPROXIMATELY 14 POUNDS (6.4 KG), SO CHOOSE ONLY A STURDY SURFACE ON WHICH TO SET THE UCAT-S.

The UCAT-S is bi-directional. It can unwind labels in either direction.

1. Slide the roll of labels to be unwound onto the shaft of the UCAT-S and all the way up against the Plastic Flange Plate.
2. Thread the labels into the printer as required.
3. Begin the printing operation and observe that the labels are feeding correctly into your printer. If necessary adjust the position of the UCAT-S so the alignment with the printer is appropriate to correctly feed the labels.