

BURST-180

Burster-Bar for use with CAT-2 Rewinder



The BURST-180 Burster Bar is shown installed on a CAT-2-CHUCK Rewinder in optional Off-Line use with a UCAT-1 Label Unwinder.

- Mounts easily on CAT-2 Rewinder
- Burst perforated tags or labels
- Use in-line with a printer or off-line with your Unwinder and Rewinder

Remove all parts from shipping container and verify contents.

Package Contents

- Burster-bar Assembly
- User Manual (this document)

Retain the Shipping Container and Packaging for Storage and Transport.

• **KEEP MANUAL IN A SAFE PLACE FOR FUTURE REFERENCE** •

Product Limited Warranty

All Labelmate Products are warranted to the original end-user customer to be free from defects in materials and workmanship. If it is determined by Labelmate that a product has failed under the terms of this warranty, the product will be repaired or replaced at no charge to the customer. Labelmate reserves all rights to determination of coverage and liability under this warranty. The warranty period for all new Labelmate products is outlined below:

Warranty Period	Products Covered
5 years	Label Rewinders Label Unwinders
3 years	Label Counters (mechanical parts only) Label Slitters (mechanical parts only) Label Dispensers Printer Mechanisms
1 year	Power Supply Modules Counter Modules Encoders Any products not specified above.

The warranty period for all products starts on the date purchased by the original end-user customer. Warranty coverage is not transferable with ownership and will terminate immediately upon rental, resale or any other change in ownership. This warranty does not cover repair to any product which is damaged, has been modified, is missing parts, or has been opened or repaired by any unauthorized person. Use of any unauthorized accessory or attachment will void coverage. Purchase documentation should be retained for coverage verification.

In the event your product requires service, please contact Labelmate at (877) 833-7149 toll-free inside the USA or +1 (702) 435-8535 outside the USA, for the location of the nearest authorized service center or questions regarding warranty coverage. The customer assumes responsibility for all cost and risk incurred in transport for service.

Labelmate makes no other warranty of any kind expressed or implied, or to suitability or fitness for a particular purpose. No other person, agent or reseller is authorized to give any warranties on behalf of Labelmate. Any obligation to warranty other than that specifically addressed above is hereby disclaimed.

LABELMATE LLC

12A Sunset Way, Henderson, NV 89014 USA
(702) 435-8535 FAX (702) 435-8536
Toll-Free (877) 833-7149 in USA!
info@labelmate.com

LABELMATE EUROPE
Brussels, Belgium



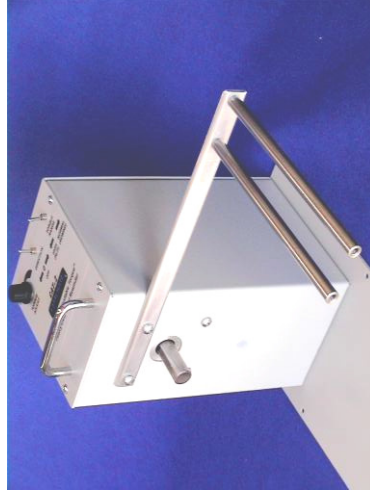
WARNING

**This product is for indoor use only.
Not for use in wet locations.**



SET-UP

1. Remove the Quick-Chuck Core Chuck and Flange from the CAT-2-CHUCK Rewinder Drive Unit and set them aside if they are installed.
2. Remove the top two Screws from the front of the Rewinder Panel where the Motor Shaft protrudes. These are two of the four Screws that hold the Motor in the Chassis. **DO NOT REMOVE THE BOTTOM TWO SCREWS OR THE MOTOR WILL FALL OUT.**
3. Refer to Fig. 2 below. The Burster Bar is shown mounted to the right on the CAT-2-CHUCK Rewinder, but it can be mounted to the left if preferred for your setup. Position the **BURST-180** Burster Bar Assembly horizontally as shown and use the two Screws removed in Step 2 to attach the Burster Bar to the CAT-2-CHUCK Rewinder as shown. Reinstall the Chuck and Flange removed in Step 1.



USE

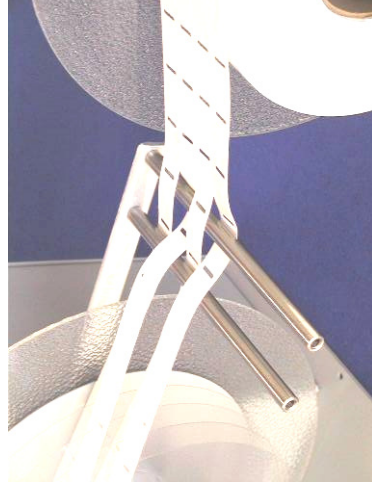
The perforated Label or Tag stock to be burst can come from either a UCAT-1 Label Unwinder (“Off-Line” use) or directly from a Printer (“In-Line” use).

In either case, the adjacent tags are threaded alternatively over and under the Burster Bars as shown in Fig. 3.

The ends of the individual strips of tags are then threaded and taped onto individual Label Cores on the CAT-2-CHUCK Rewinder.

Use Separator Plates (sold separately) in between the tag rolls to make removal from the CAT-2-CHUCK Rewinder easier.

See the photo on the front page for set-up for high-speed Off-Line use.



MAINTENANCE

The **BURST-180** Burster Bar requires no maintenance.